

Strong foundation

The PowerShell App Deployment Toolkit (ADT) is a popular tool in the world of software packaging. However, its use requires extensive PowerShell knowledge and it does not offer any comfort or support in script creation.

The NWC Packaging PowerBench is based on the ADT, but considerably extends its scope of services. It is aimed at demanding packagers and offers an intuitive graphical interface. Packaging tasks are dialog-based and can be performed without PowerShell knowledge.

The decades of experience of NWC Services in packaging thousands of applications flowed into the development in order to be able to handle almost every conceivable use case.

Customer's voice



"The tool combines the strengths of the DSM editor with PowerShell. We can keep familiar and appreciated ways of working, switch to PowerShell almost as a side effect and, on top of that, have the certainty that the new packages will run with any software distribution system. Great!"

Volker Hutzemann, Kassenärztliche Vereinigung Baden Württemberg

Highlights

- Creation of PowerShell packages for automated distribution – in an intuitive, user-friendly and “graphically” supported manner in the style of the DSM eScript editor
- Universal tool for all software distribution solutions, especially those without their own packaging engine
- Use of packages with any software distribution system – thanks to universal technology (PowerShell)
- Excellent import and export possibilities of packages for **Microsoft Endpoint Manager** and **Ivanti DSM** (connection to the Winget repository, export to Intune format etc.)
- For our numerous DSM customers: Migration of Ivanti DSM packages into PowerShell packages – also automated



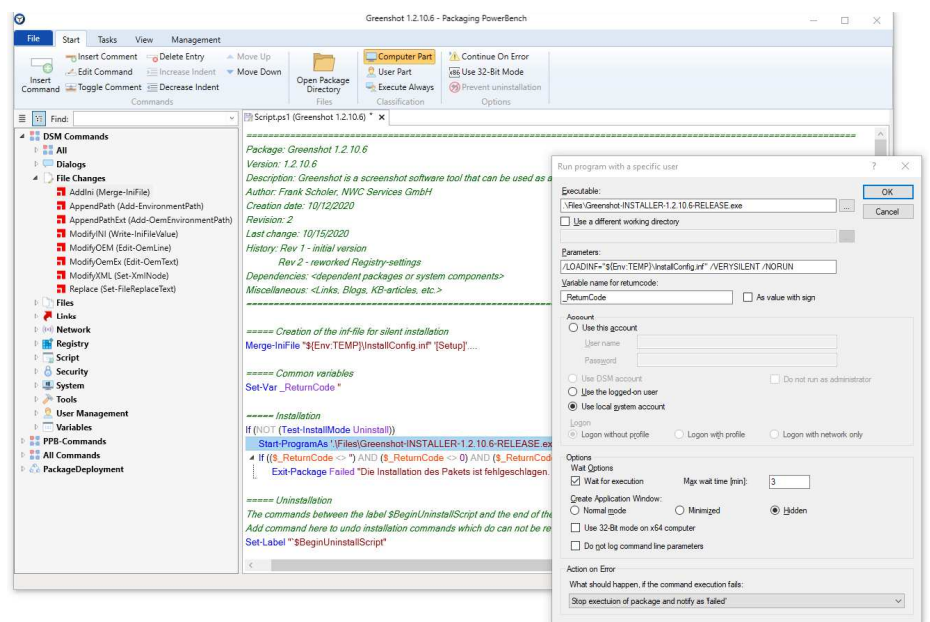
NWC Packaging PowerBench

Packages for all environments – intuitive, graphical, PowerShell

After many years of joint projects with our customers concerning the deployment of software on clients and servers, we know one thing for sure: the packaging of applications is and remains a central component of all efforts for extensive automation in system administration.

Depending on the solution used (e.g. Ivanti DSM, Ivanti Endpoint Manager, Microsoft Endpoint Configuration Manager or others), different, partly proprietary technologies are used. This considerably hinders the transfer of packages between distribution environments, which can lead to enormous efforts for the re-creation of packages in case of a strategic change to another deployment solution.

*We have addressed these and other technical challenges and present our response, which is under continuous development: The **NWC Packaging PowerBench (PPB)**.*



Interface of the Packaging PowerBench: graphical editor with the example of a command dialog

Benefits of Packaging PowerBench

- The platform neutrality enables the use of the created packages via any distribution solution. This ensures independence from the deployment tool used.
- No PowerShell knowledge is required.
- Packages are created using a graphical editor with numerous dialogs (in the style of the DSM eScript editor), which cover all the essential functions for packaging. This virtually eliminates syntax errors.
- Scripting with Packaging PowerBench provides very fast results.
- Based on created packages, the code can be specifically reworked if additional needs arise.
- Extension with additional PowerShell modules is possible.
- Scripting processes can be consistently standardized based on appropriate packaging guidelines.
- The “package code” is easier to read than the PowerShell code.
- Almost all packaging scenarios can be addressed “out-of-the-box”.
- In contrast to pure PowerShell, the Packaging PowerBench also allows comfortable working with corresponding dialogs for e.g. if/else loops or when using variables.
- The available commands are sorted into categories (e.g. file changes, registry, security, system, etc.) for easy access.
- Special adaptations to Microsoft MEMCM and Intune: Import from Winget repository, export packages to Intune format, publish created packages directly to MEMCM or Intune.
- The integrated option to digitally sign packages meets the security requirements of modern IT environments.
- Packages can now be revised so that several versions of a package can be used according to the situation.
- When uninstalling packages, it is possible to control individual commands.
- The graphical editor already includes more than 130 commands transferred from eScript.
- Templates for EXE, MSI, MSIX, APPX packages are supplied.
- The user interface is individually and graphically customizable.

Do it yourself:

Would you like to try out our NWC Packaging PowerBench and get to know the advantages in more detail? Then we look forward to hearing from you.

NWC Services GmbH

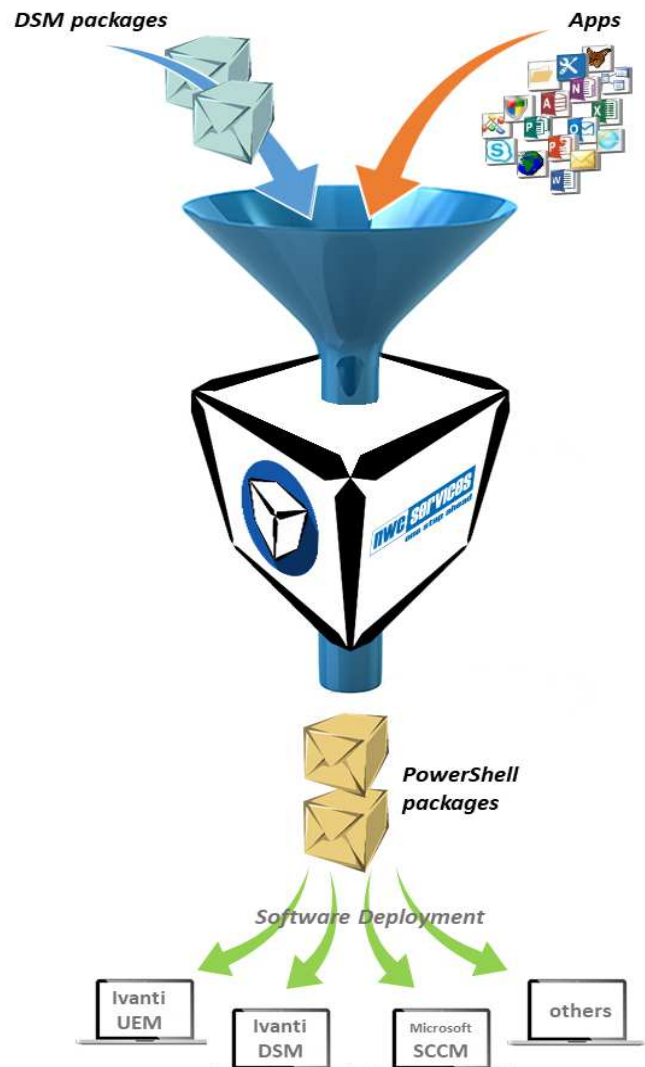
Headquarter:

Karlsruher Strasse 34
75179 Pforzheim
Germany
Tel.: +49 7231 127-100
Fax: +49 7231 127-127

Branch office Rhineland

Schlossstrasse 70
51429 Bergisch Gladbach
Germany
Tel.: +49 2204 70385-88
Fax: +49 2204 70385-89

www.nwc-services.de
info@nwc-services.de



Special aspects for DSM users

DSM customers often find themselves in the situation of having to look for an alternative deployment solution and plan a corresponding migration. The main aspect of this process is always the handling of the existing software packages, which can be numerous.

The Packaging PowerBench (PPB) provides a double approach: On the one hand, it migrates existing DSM packages into PowerShell packages. On the other hand, even with a running DSM environment, it saves later efforts due to package migrations. This is because the Packaging PowerBench creates platform-independent PowerShell packages. They can be used in case of a switch to another deployment tool without any need for migration.

In addition DSM customers in particular benefit from further possibilities of the Packaging PowerBench:

- Integration of all relevant DSM script commands and also new commands that are useful for packaging but are not available in DSM
- Translation of variables when importing DSM packages
- Conversion of package properties when importing DSM packages
- Popular immediate installation and uninstall of packages via “F7” and “F8”
- Hints on necessary changes of script options during package conversion
- Many other practical functions